

Space for Lease



539 E. Santa Fe, Olathe, KS



OVERVIEW

- 836 – 1,850 SF
- Established Sub Shop Location
- Great Visibility & Access to Santa Fe
- Abundant Parking
- Aggressive Rental Rate

DEMOGRAPHICS

Radius	1 Mile	3 Miles	5 Miles
Population*	12,556	84,718	140,559
Avg. HH Income	\$66,253	\$84,637	\$97,359

*2010 Estimate

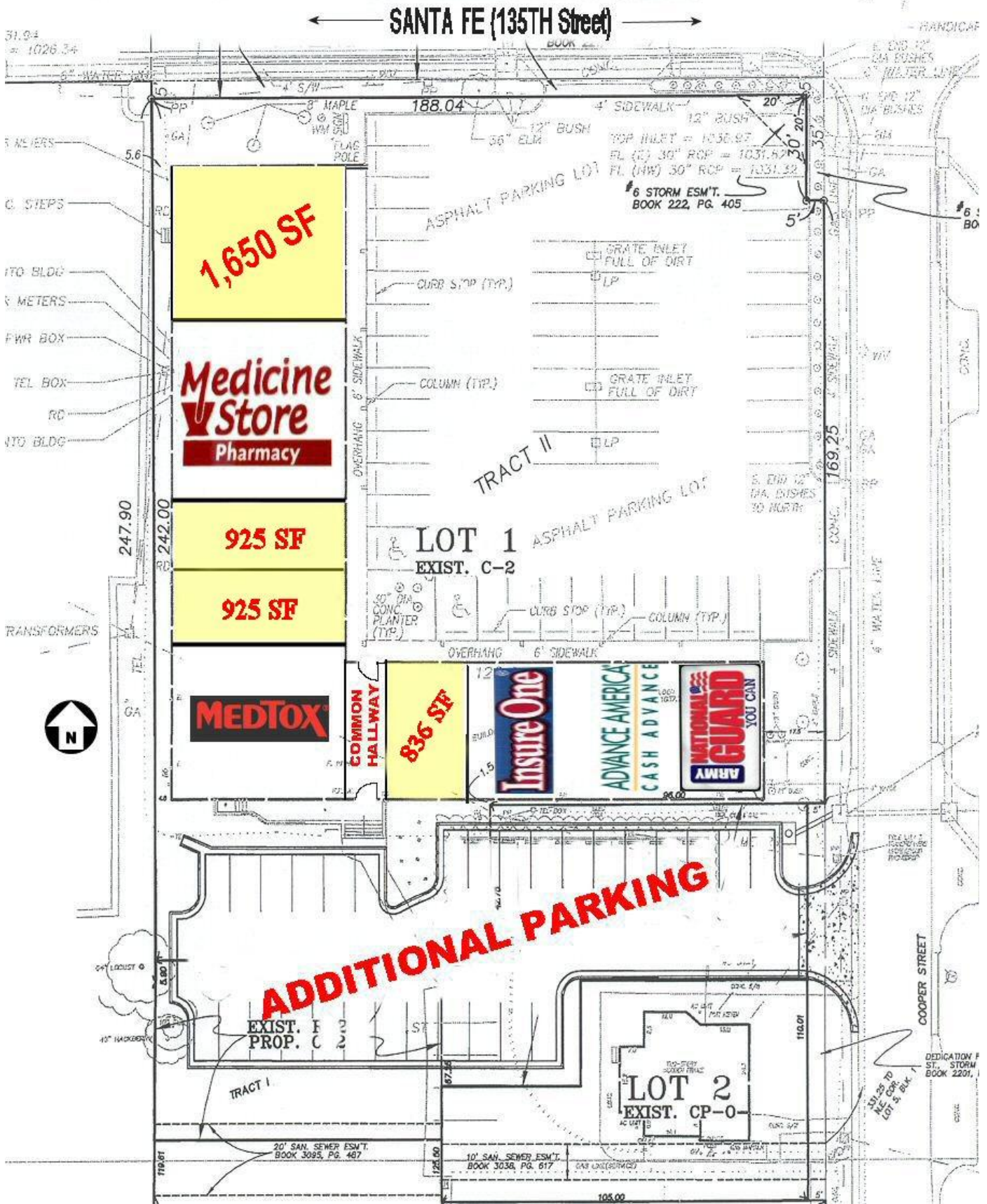
All Information furnished regarding property for sale or lease is from sources believed to be reliable, but we cannot guarantee the accuracy thereof, and same is submitted subject to errors, change of price, or other conditions, or withdrawal without notice.



CONTACT:
John Byram
(913) 722-5229

BYRAM REAL ESTATE
 5350 W. 94th Terr., Suite 201, Prairie Village, KS 66207
 Phone (913) 722-5229 / Fax (913) 722-0909
 Email ~ John@ByramRE.com / www.ByramRE.com





Executive Summary



539 E Santa Fe St, Olathe, K...

	1 mile radius	3 miles radius	5 miles radius
2010 Population			
Total Population	12,556	84,718	140,559
Male Population	50.7%	49.8%	49.7%
Female Population	49.3%	50.2%	50.3%
Median Age	33.3	32.5	32.7
2010 Income			
Median HH Income	\$57,978	\$76,319	\$84,003
Per Capita Income	\$26,763	\$30,682	\$34,366
Average HH Income	\$66,253	\$84,637	\$97,359
2010 Households			
Total Households	4,991	30,524	49,364
Average Household Size	2.48	2.73	2.81
2010 Housing			
Owner Occupied Housing Units	53.2%	65.1%	68.7%
Renter Occupied Housing Units	42.8%	31.1%	26.9%
Vacant Housing Units	4.0%	3.7%	4.4%
Population			
1990 Population	11,900	59,200	68,165
2000 Population	12,119	73,362	104,611
2010 Population	12,556	84,718	140,559
2015 Population	12,772	90,221	154,180
1990-2000 Annual Rate	0.18%	2.17%	4.38%
2000-2010 Annual Rate	0.35%	1.41%	2.92%
2010-2015 Annual Rate	0.34%	1.27%	1.87%
Households			
1990 Households	4,438	20,151	23,089
2000 Households	4,715	25,684	36,285
2010 Households	4,991	30,524	49,364
2015 Households	5,112	32,775	54,496
1990-2000 Annual Rate	0.61%	2.46%	4.62%
2000-2010 Annual Rate	0.56%	1.7%	3.05%
2010-2015 Annual Rate	0.48%	1.43%	2%
Median Household Income			
1990 Median HH Income	\$28,921	\$39,026	\$41,039
2000 Median HH Income	\$42,858	\$56,909	\$62,944
2010 Median HH Income	\$57,978	\$76,319	\$84,003
2015 Median HH Income	\$66,503	\$85,041	\$96,560
1990-2000 Annual Rate	4.01%	3.84%	4.37%
2000-2010 Annual Rate	2.99%	2.9%	2.86%
2010-2015 Annual Rate	2.78%	2.19%	2.83%
Per Capita Income			
1990 Per Capita Income	\$12,331	\$14,613	\$15,451
2000 Per Capita Income	\$19,354	\$22,848	\$25,476
2010 Per Capita Income	\$26,763	\$30,682	\$34,366
2015 Per Capita Income	\$30,624	\$34,129	\$37,843
1990-2000 Annual Rate	4.61%	4.57%	5.13%
2000-2010 Annual Rate	3.21%	2.92%	2.96%
2010-2015 Annual Rate	2.73%	2.15%	1.95%
Average Household Income			
1990 Average Household Income	\$31,433	\$42,524	\$45,406
2000 Average Household Income	\$49,107	\$64,573	\$72,861
2010 Average HH Income	\$66,253	\$84,637	\$97,359
2015 Average HH Income	\$75,300	\$93,458	\$106,564
1990-2000 Annual Rate	4.56%	4.27%	4.84%
2000-2010 Annual Rate	2.96%	2.67%	2.87%
2010-2015 Annual Rate	2.59%	2%	1.82%
Population by Employment			
Total Businesses	684	3,123	4,749
Total Employees	9,106	45,992	78,655