

# Space for Lease

**BYRAM**  
REAL ESTATE

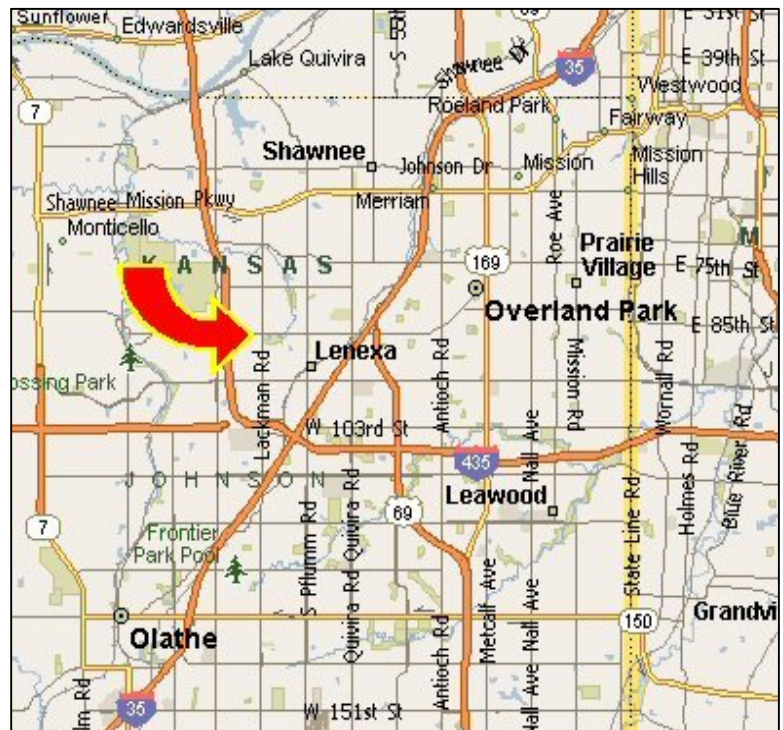
15605 W. 87<sup>th</sup> Street, Lenexa, KS



## OVERVIEW

- 1,192 – 4,639 SF
- High Growth Area
- Great Visibility & Access to 87<sup>th</sup> Street
- Building and Monument Signage
- Join Papa John's, The UPS Store, Custom Eyes and more

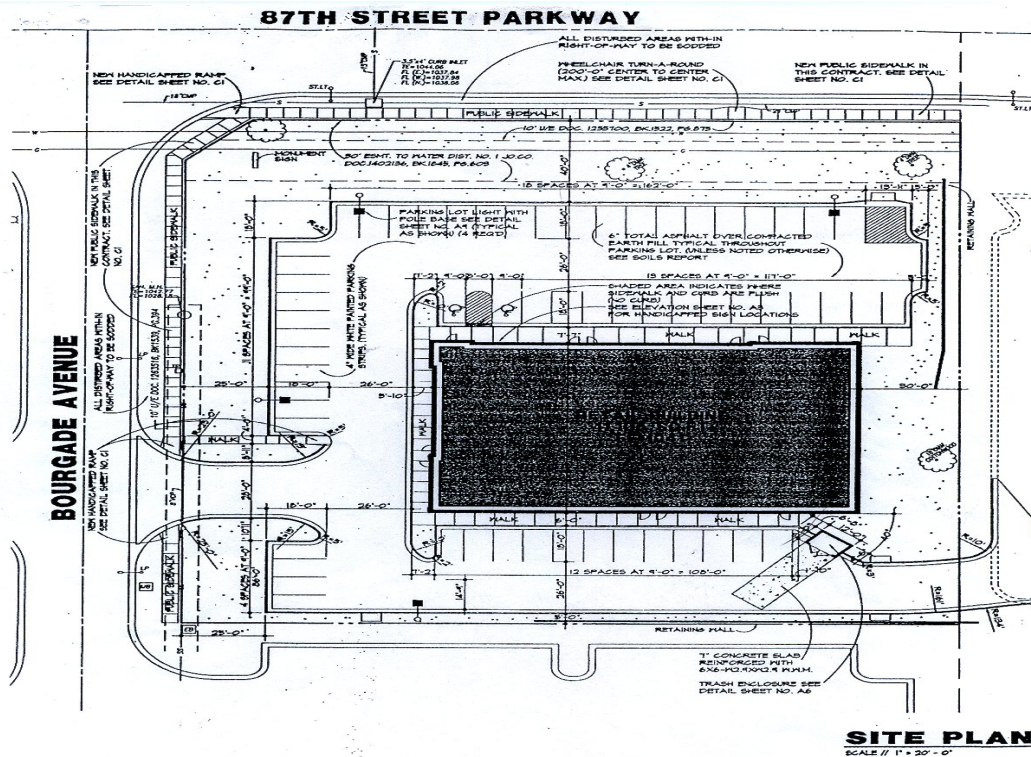
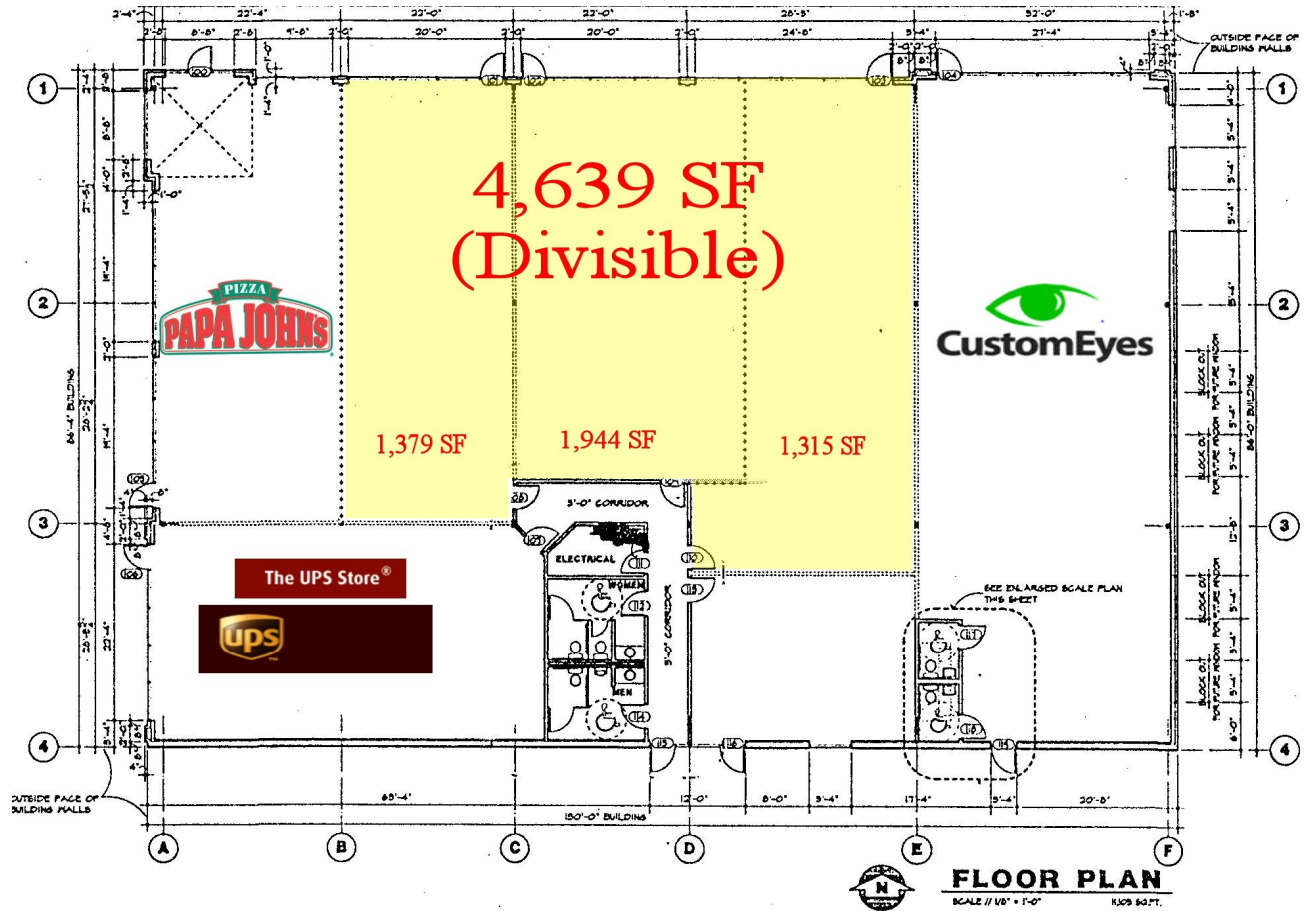
All Information furnished regarding property for sale or lease is from sources believed to be reliable, but we cannot guarantee the accuracy thereof, and same is submitted subject to errors, change of price, or other conditions, or withdrawal without notice.



CONTACT INFO:  
**John Byram**  
**(913) 722-5229**

**BYRAM REAL ESTATE**  
5350 W. 94<sup>th</sup> Terr., Suite 201, Prairie Village, KS 66207  
Phone (913) 722-5229 / Fax (913) 722-0909  
Email ~ [John@ByramRE.com](mailto:John@ByramRE.com) / [www.ByramRE.com](http://www.ByramRE.com)







## Executive Summary

Prepared by John Byram

15609 W 87th Street Pkwy, Le...

Latitude: 38.970893  
Longitude: -94.767719

**Ring: 1, 3, 5 Miles**

	1 mile radius	3 miles radius	5 miles radius
<b>2010 Population</b>			
Total Population	14,144	56,187	169,200
Male Population	49.6%	49.1%	48.8%
Female Population	50.4%	50.9%	51.2%
Median Age	35.3	36.9	36.9
<b>2010 Income</b>			
Median HH Income	\$86,195	\$80,420	\$75,459
Per Capita Income	\$37,902	\$37,807	\$36,289
Average HH Income	\$97,863	\$95,341	\$88,240
<b>2010 Households</b>			
Total Households	5,534	22,083	69,394
Average Household Size	2.54	2.51	2.41
<b>2010 Housing</b>			
Owner Occupied Housing Units	58.9%	60.3%	61.2%
Renter Occupied Housing Units	34.6%	34.0%	34.0%
Vacant Housing Units	6.5%	5.7%	4.8%
<b>Population</b>			
1990 Population	9,614	42,544	128,128
2000 Population	12,513	49,069	147,547
2010 Population	14,144	56,187	169,200
2015 Population	14,893	59,348	178,318
1990-2000 Annual Rate	2.67%	1.44%	1.42%
2000-2010 Annual Rate	1.2%	1.33%	1.34%
2010-2015 Annual Rate	1.04%	1.1%	1.06%
<b>Households</b>			
1990 Households	3,381	15,667	50,080
2000 Households	4,667	18,765	59,512
2010 Households	5,534	22,083	69,394
2015 Households	5,908	23,512	73,469
1990-2000 Annual Rate	3.28%	1.82%	1.74%
2000-2010 Annual Rate	1.68%	1.6%	1.51%
2010-2015 Annual Rate	1.32%	1.26%	1.15%
<b>Per Capita Income</b>			
1990 Per Capita Income	\$21,354	\$19,856	\$19,124
2000 Per Capita Income	\$30,029	\$29,689	\$28,376
2010 Per Capita Income	\$37,902	\$37,807	\$36,289
2015 Per Capita Income	\$41,345	\$41,911	\$40,493
1990-2000 Annual Rate	3.47%	4.1%	4.02%
2000-2010 Annual Rate	2.3%	2.39%	2.43%
2010-2015 Annual Rate	1.75%	2.08%	2.22%
<b>Average Household Income</b>			
1990 Average Household Income	\$60,863	\$53,307	\$48,739
2000 Average Household Income	\$80,615	\$76,431	\$69,487
2010 Average HH Income	\$97,863	\$95,341	\$88,240
2015 Average HH Income	\$105,520	\$104,842	\$98,039
1990-2000 Annual Rate	2.85%	3.67%	3.61%
2000-2010 Annual Rate	1.91%	2.18%	2.36%
2010-2015 Annual Rate	1.52%	1.92%	2.13%
<b>Population by Employment</b>			
Total Businesses	220	3,004	7,480
Total Employees	5,290	59,375	122,707